

DTF-T654

DIRECT TO FILM PRINTER



Self-development



long life



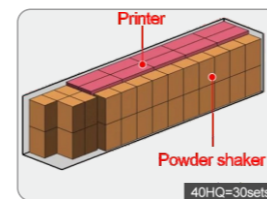
High precision



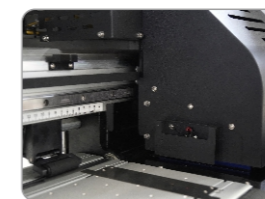
low cost

TECHNICAL PARAMETER

Model	DTF-T653		DTF-T654
Printhead	Epson I3200-A1/Epson I1600-A1		
Printhead Quantity	3		4
Printing Color	4C+Fo+Fm+Fy+Fg+W		CMYK+W
Printing Speed	I3200-A1	High speed mode	720*1800DPI 6PASS 9m ² /h 720*2400DPI 8PASS 6m ² /h
		High precision mode	720*1800DPI 6PASS 7m ² /h 720*2400DPI 8PASS 5m ² /h
	I1600-A1		720*900DPI 6PASS 4m ² /h 720*1200DPI 8PASS 3m ² /h 720*1800DPI 12PASS 2m ² /h
			720*1200DPI 4PASS 23m ² /h 720*1800DPI 6PASS 15m ² /h 720*2400DPI 8PASS 11m ² /h
Printing Size	600mm		
RIP Software	RIIN/Flexiprint/CADlink/Maintop/NeoStampa		
Heating Method	Front and back independent heating		
Ink System	Auto ink supply, white ink circulating and stirring		
Power Supply	Printer: 110V/220V 350W 50~60HZ Powder Shaker: 220V 3500W 50~60HZ		
Work Environment	Temperature: 20°C~30°C Humidity: 35%~65%		
Machine Size/Weight	Printer: 1801*719*1597mm 200kg Powder Shaker: 1008*1010*1082mm 97kg		
Packaging Size/Weight	Printer: 1890*740*850mm 213kg Powder Shaker: 940*780*1190mm 116kg		



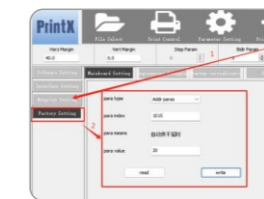
Saves freight and space



Anti-collision system



3-stage heating zones



Powder shaker linkage intelligent protection